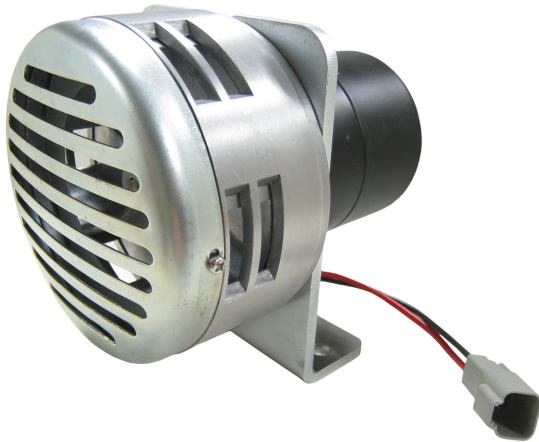


# HEAVY DUTY CATTLE SIREN

# PIERCE

PULLING FOR YOU



<b>CATEGORY</b>	RANCH
-----------------	-------

<b>PART NO.</b>	PS093
-----------------	-------

<b>PRODUCT DESCRIPTION</b>	
12V Heavy Duty Cattle Siren	

<b>SPECIFICATIONS</b>	
<b>DIMENSIONS</b>	4.5" x 4.5" x 6.33"
<b>BOX DIMENSIONS</b>	5.63" x 5.63" x 7.15"
<b>VOLTAGE</b>	12V
<b>RUN TIME</b>	10 mins.
<b>DECIBEL LEVEL</b>	135 dB
<b>WARRANTY</b>	2 years

The moisture drain is located on the bottom of the cattle siren, and must be facing downwards to prevent moisture from accumulating.

To rotate mounting bracket for upside down mounting remove the four philips head screws.

Pull bracket back.

Rotate bracket and bolt back into place. This will allow the moisture drain to remain facing downwards.

